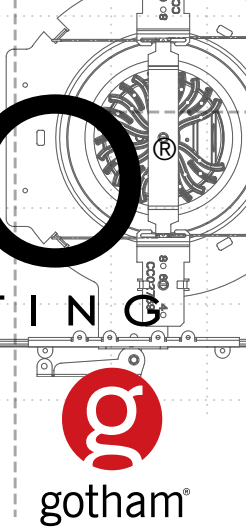


# EVO

SOLID-STATE LIGHTING

SCIENCE POWERS DESIGN



Gotham® EVO® Solid-State Lighting Products No.3

# FUTURE READY

**What does the future look like?** That's a question we'll leave to the imagination of a science-fiction writer. What we do know is that LED technology is advancing and luminaires must be able to EVOLVE.

EVO® is a family platform specifically designed to allow for the integration of advances in solid-state technology. Leveraging a modular design allows Gotham to reconfigure the mixing chamber, reflector, lenses, drivers and LEDs independently of one another, creating enormous flexibility to upgrade efficiency and efficacy.

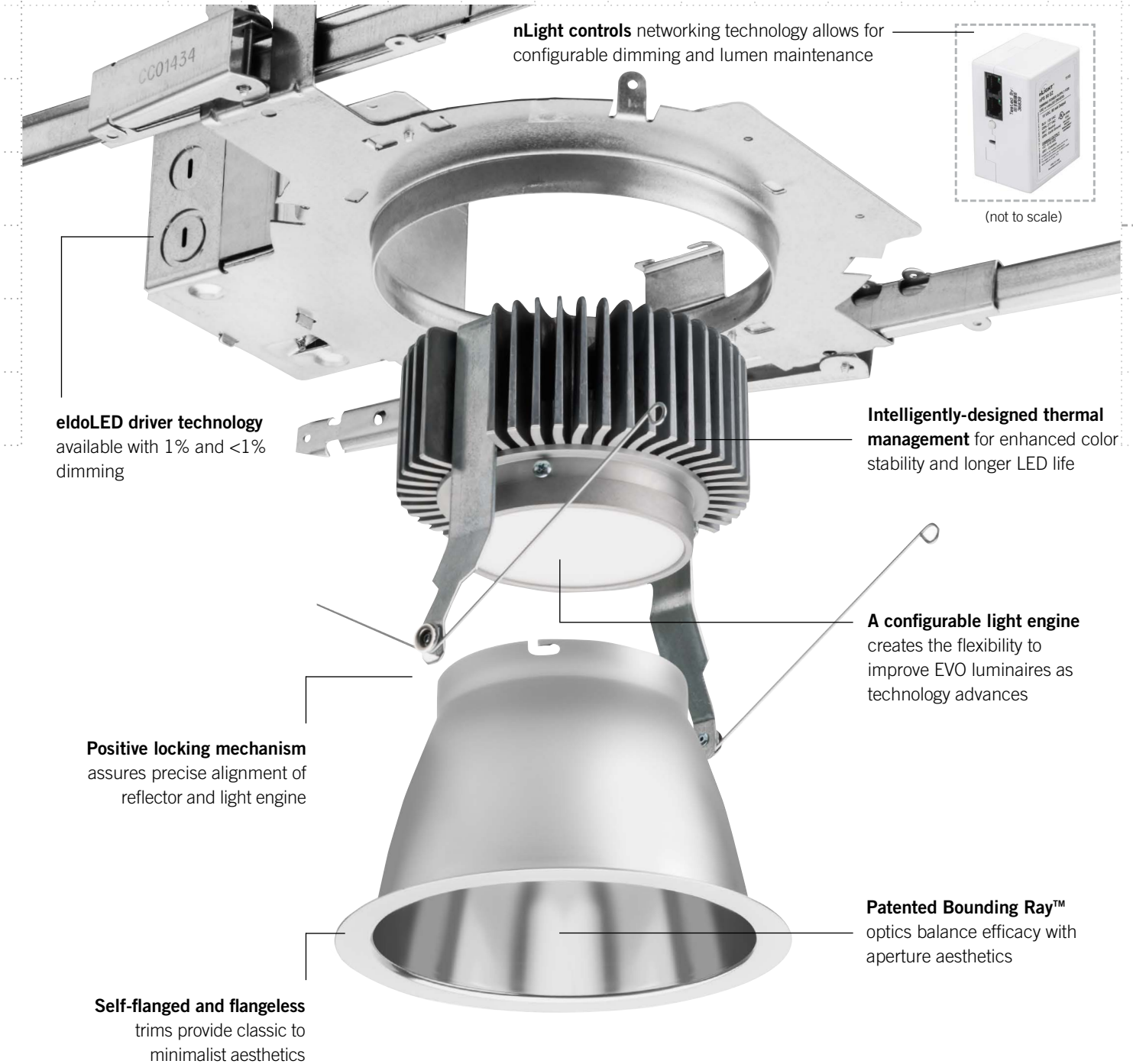
EVO luminaires that arrive on-site will deliver precisely the performance characteristics specified (like lumen output, distribution and color temperature) using the most up-to-date, energy efficient configurations available. Here's how we make it possible:

## The Configurable Light Engine

A modular design allows Gotham to reconfigure the mixing chamber, reflector, lenses and LEDs independently of one another, creating enormous flexibility for improvements to EVO luminaires as technology advances. This ensures consistency in both quality and quantity of light, while still giving us wide latitude to continuously upgrade efficiency and efficacy. The benefits, from top to bottom:



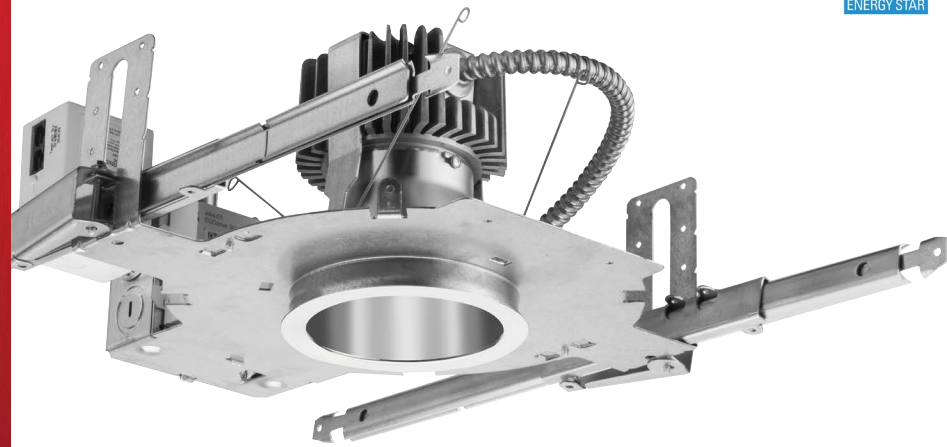
- 1 REMOVING HEAT** / EVO's thermal design ensures that LED temperatures remain below the thermal limit. Enhanced color stability is a direct result, along with better fixture-to-fixture consistency and longer LED life.
- 2 PROVIDING LIGHT** / LED boards in all EVO luminaires are configurable and replaceable, enabling us to upgrade to higher-efficiency systems as technology advances. The LEDs are binned to a 2.5-step MacAdam's ellipse to achieve consistent color from luminaire to luminaire.
- 3 BLENDING LIGHT** / EVO mixing chamber optics are built using 98.5% reflective material, and shaped to eliminate color separation and pixilation to produce smooth, pleasing light.
- 4 FOCUSING LIGHT** / A lens composed of 92% transmissive holographic film forms the heart of EVO's modular design. This is the final step in a process to collimate light, and create a luminaire with optimal distribution.
- 5 CONTROLLING LIGHT** / With eldoLED drivers dimming to 1% or <1% via 0-10V, DALI or DMX/RDM and nLight by Acuity Controls, EVO delivers premium dimming and networkable control solutions.



An impressive range of configurations with five distribution options for EVO luminaires.





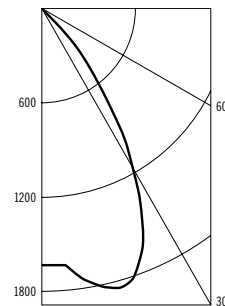


EVO open downlight (Series: EVO4, EVO6, EVO8) / lm/W: Up to 112.3

**Diffusing the point.** Traditionally, various sources were used to execute the vision for illuminating architecture. Different source types can render a space, an object and people differently. Choosing the source was dependent on the design intent. LED as a source has the potential to create many, if not all, of the attributes of every traditional source. The EVO® family of downlights has been designed to efficiently diffuse an LED source creating the soft edge, general illumination that you would expect from a CFL, frosted A-lamp or coated HID.

Spaces lighted with EVO luminaires feature distributions that feather cleanly while maintaining a pleasingly quiet ceiling. An efficient, proprietary light engine performs in harmony with Gotham's patented Bounding Ray optical principle, inhibiting unwanted glare.

- Available with multiple distributions from .5 to 1.2 spacing-to-mounting-height ratios
- Outstanding delivered lumens ranging from 250 to 17,500, with efficacies >100 lm/W in most offerings.
- Patented Bounding Ray™ optics balance efficacy with aperture aesthetics
- EVO solid-state luminaires tested to LM-79-08 standards and ENERGY STAR® certified — EVO LEDs tested to LM-80 standards



EVO® Distributions  
This application is ideally suited for EVO.

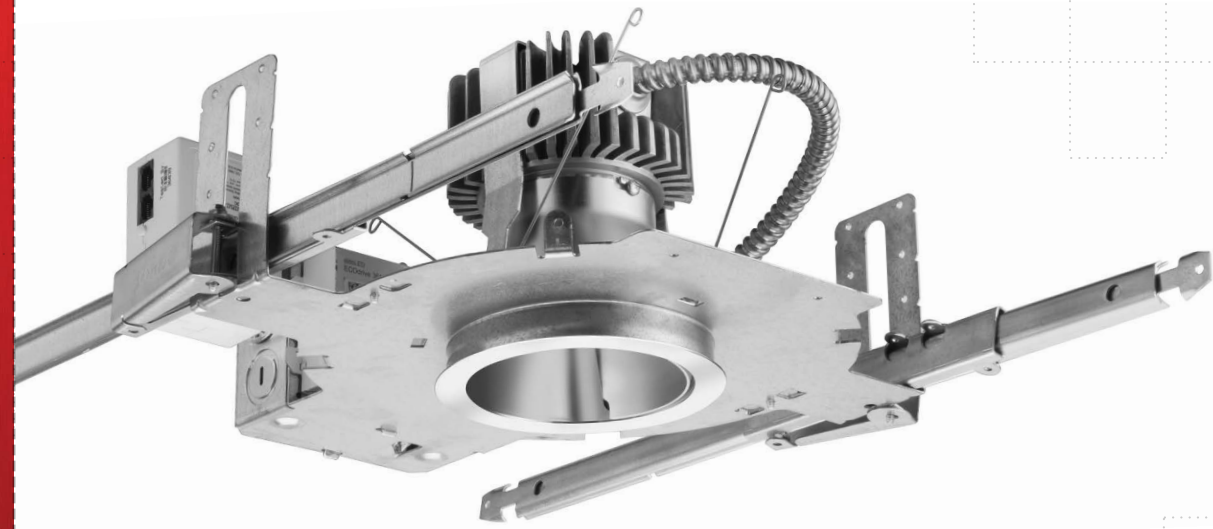
0.5 S/MH  
Very Narrow

0.7 S/MH  
Narrow

0.9 S/MH  
Medium

1.0 S/MH  
Medium-Wide

1.2 S/MH  
Wide



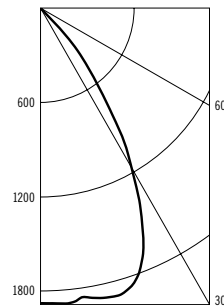
**EVO<sup>®</sup> Distributions**



EVO open wallwash (Series: EVO4WW, EVO6WW, EVO8WW) / lm/W: Up to 99.2

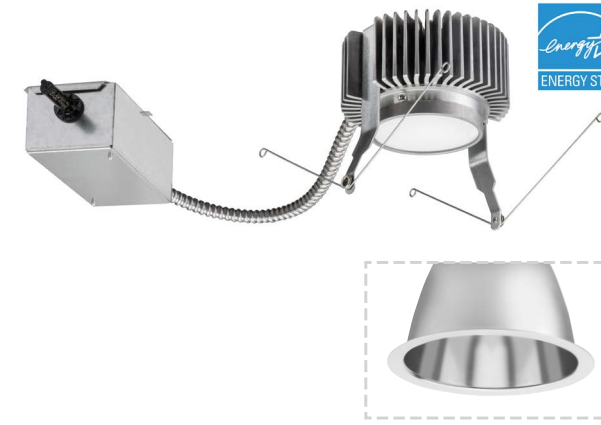
**Companion piece.** Seen together with EVO<sup>®</sup> open downlights, this luminaire gives you the ability to illuminate vertical surfaces while maintaining a consistent visual rhythm in the ceiling.

- Patented Bounding Ray™ optics balance efficacy with aperture aesthetics
- EVO solid-state luminaires tested to LM-79-08 standards — EVO LEDs tested to LM-80 standards



For additional photometric information, please visit [www.gothamighting.com](http://www.gothamighting.com).

EVO. FUTURE READY.



EVO retrofit kit (Series: EVO4R, EVO6R, EVO8R): open & open wallwash / lm/W: 97.0 (4500lm)

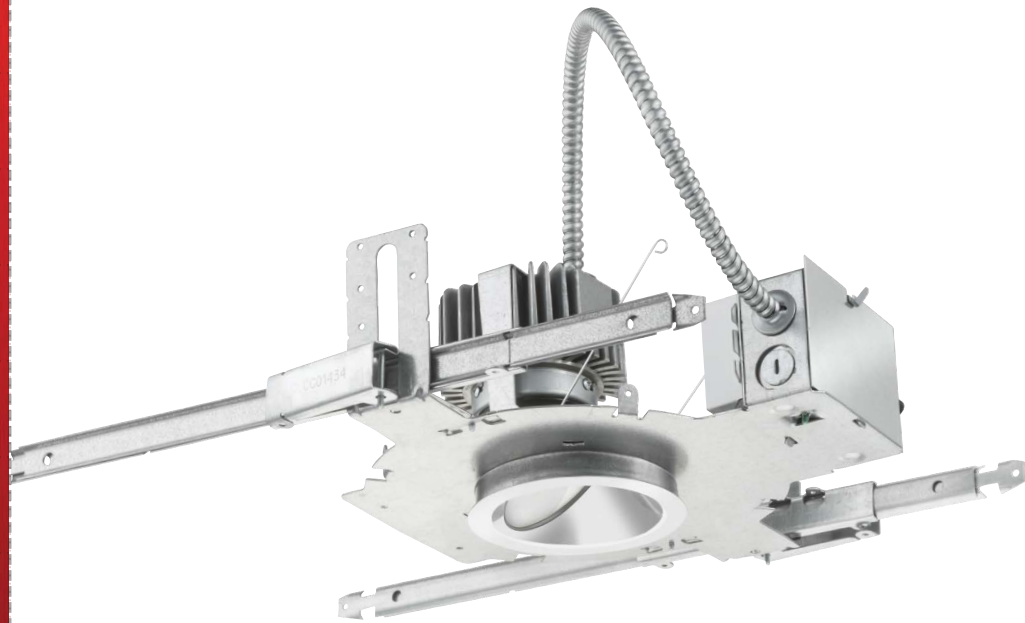
**EVO<sup>®</sup> retrofit: Convert to solid-state.** Compared with CFL, HID, or incandescent, LED can reduce energy usage by as much as 81% over what you may be using now. That's a dramatic number. EVO allows you to take advantage of this without diminished performance — Gotham<sup>®</sup> brings all the features and benefits of an EVO open downlight to a retrofit luminaire.

- Designed for Gotham downlight frames — contact us for non-Gotham renovation needs
- Patented Bounding Ray™ optics balance efficacy with aperture aesthetics
- EVO solid-state luminaires tested to LM-79-08 standards and ENERGY STAR<sup>®</sup> certified — EVO LEDs tested to LM-80 standards

**EVO<sup>®</sup> Distributions**  
This application is ideally suited for EVO.







EVO lensed wallwash (Series: EVO4LW, EVO6LW) / lm/W: Up to 86.2

**Uniformity from floor to ceiling.** Smooth, balanced illumination is the hallmark of a superior wallwash. Exceptional performance is plainly visible: Vertical surfaces lit uniformly from top to bottom as well as from side to side, free of hot spots or visible striations. These wallwashers deliver precisely that level of performance — along with the energy efficiency possible from LED and the Future-Ready features available only with EVO<sup>®</sup>.

- Excellent uniformity, providing smooth distribution of light to the wall, free of room-side glare and without direct view of LEDs
- EVO solid-state luminaires tested to LM-79-08 standards — EVO LEDs tested to LM-80 standards



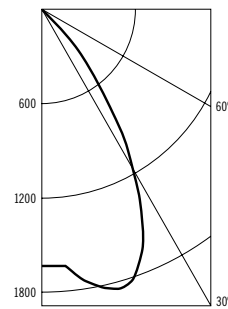




EVO round flangeless (trim type: FL) / lm/W: Up to 112.3

**Flat is beautiful.** EVO® flangeless allows for a flush-mount appearance in drywall ceiling applications. The flange virtually disappears, making it possible to achieve a clean, smooth surface plane.

- Virtually invisible flange creates a modern, architectural look without compromising performance
- Once installed, the luminaire, and ceiling are tightly anchored together to restrict movement and prevent ceiling cracking
- Patented Bounding Ray™ optics balance efficacy with aperture aesthetics
- EVO solid-state luminaires tested to LM-79-08 standards and ENERGY STAR® certified — EVO LEDs tested to LM-80 standards



For additional photometric information, please visit [www.gothamlighting.com](http://www.gothamlighting.com).



EVO® Distributions  
This application is ideally suited for EVO flangeless.



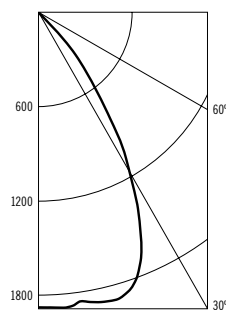




EVO surface-mount cylinder (Series: EVO6CYL, EVO8CYL) / lm/W: Up to 112.3

**Beyond the ceiling.** You need a luminaire with the optics and appearance of a downlight, but don't have the ability to install one. This cylinder is an obvious solution.

- Optics identical to those of EVO<sup>®</sup> downlights for visual consistency between cylinders and recessed lighting types
- Patented Bounding Ray<sup>™</sup> optics balance efficacy with aperture aesthetics
- EVO solid-state luminaires tested to LM-79-08 standards and ENERGY STAR<sup>®</sup> certified — EVO LEDs tested to LM-80 standards



For additional photometric information, please visit [www.gothamlighting.com](http://www.gothamlighting.com).



**EVO<sup>®</sup> Distributions**  
This application is ideally suited for EVO cylinders.





# SQUARE MEANS SQUARE

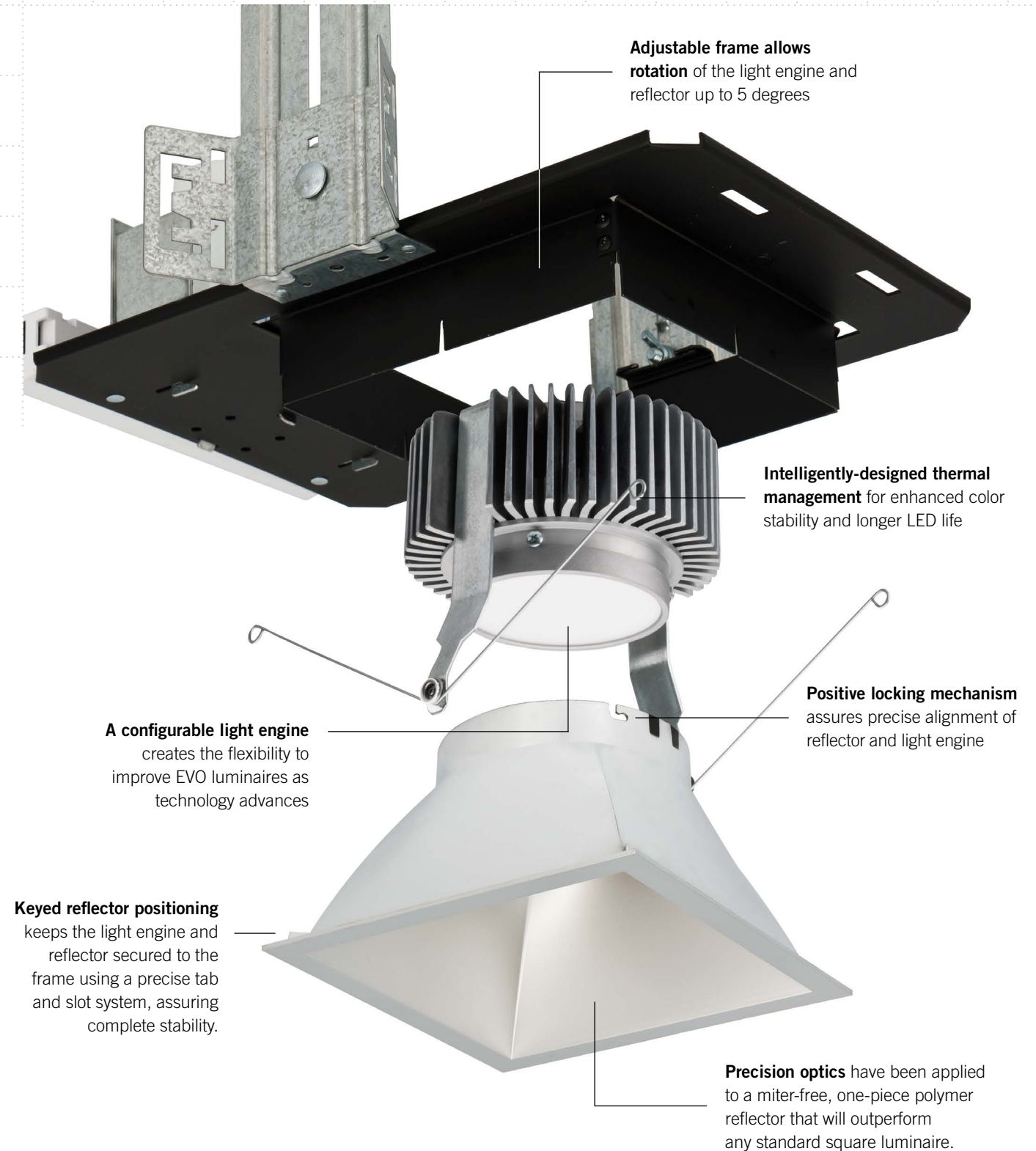
**Why choose a square downlight?** To create a distinctive rhythm. To veer away from convention toward a more geometric look. To acknowledge the appeal of straight edges and corners.

In short, the decision is a purely aesthetic one. Which is a perfectly legitimate reason to choose any luminaire. But the larger point is this: Square luminaires are rarely specified for their performance. With EVO®, that's not the case.

## Refining the Square

EVO squares provide the future-ready modular design benefits inherent in every EVO luminaire: configurable and upgradable LED boards, 2.5-step MacAdam's ellipse binning for color consistency, and extraordinary dimming and controls capabilities.

- 1 PERFECT ALIGNMENT** / EVO's adjustable frame allows rotation of the light engine and reflector up to 5 degrees after the frame is installed. Alignment becomes a very simple task. EVO squares also feature keyed reflector positioning — the reflector is secured to the frame with a precise tab and slot system. Once in place, it stays in place.
- 2 MITER-FREE CONSTRUCTION** / Most square luminaires use mitered corners, which are subject to racking, distortion, and light leaks. EVO squares feature miter-free, one-piece polymer composite reflectors that maintain their integrity and performance: Square now, square later.
- 3 AZIMUTHAL DESIGN** / Using advanced mathematics and manufacturing, Gotham's design team has created a unique one-piece reflector. A circular profile adjacent to the light engine transforms seamlessly into a square at the flange — resulting in optics that outperform any standard square luminaire.
- 4 CONTROLLING LIGHT** / With eldoLED drivers dimming to 1% or <1% via 0-10V, DALI or DMX/RDM and nLight by Acuity Controls, EVO delivers premium dimming and networkable control solutions.



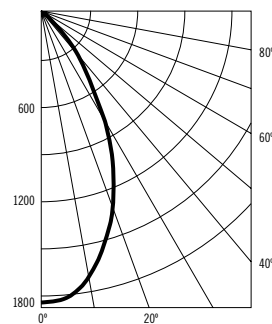




EVO open square LED (Series: EVO4SQ, EVO6SQ) / lm/W: Up to 120.0

**■ The circle in the square.** The heart of the EVO® square is a sophisticated azimuthal reflector. At one end is EVO's high-performance, solid-state light engine, at the other a square flange. The precise transition between the two yields a luminaire with vanguard performance simply impossible to duplicate using standard square reflectors.

- Innovative azimuthal reflector is miter-free, one-piece, polymer composite and will not distort or separate — no racking, no light leaks
- Keyed reflector positioning keeps the light engine and reflector aligned and locked in position — adjustable frame allows up to 5° of rotation after installation
- Exceptional performance and modular design — like every EVO luminaire, EVO squares boast configurable LED boards and 2-5-step MacAdam's ellipse binning
- The EVO square lensed wallwash allows you to keep the same shape as the downlight, but with added vertical illumination for uniform wallwashing

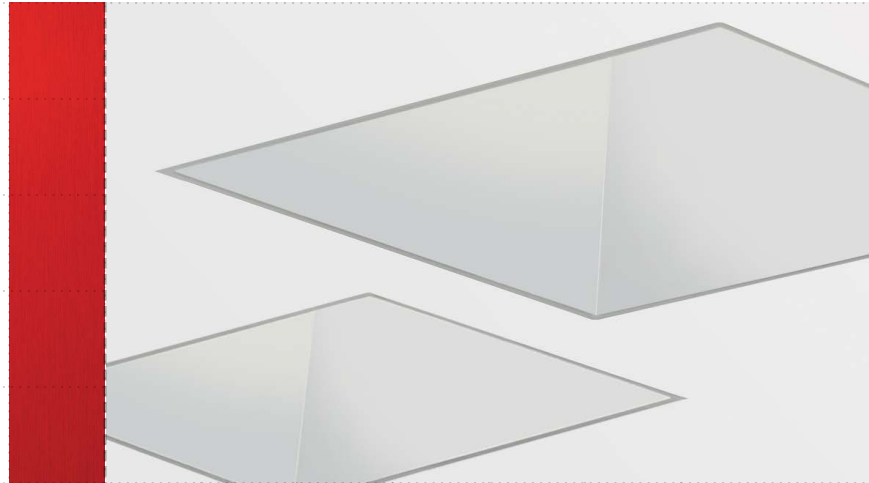


For additional photometric information, please visit [www.gothamlighting.com](http://www.gothamlighting.com).





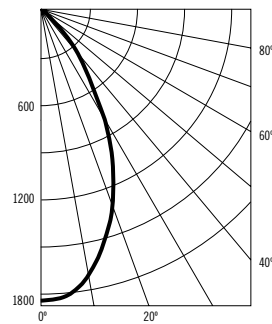
16



EVO square flangeless (trim type: FL) / lm/W: Up to 120.0

**■ Square plane.** For architectural settings where a minimalist, geometric approach might be appropriate, EVO® offers a square flangeless luminaire. In drywall ceiling applications, its flush-mount appearance causes the flange to virtually disappear, allowing the square to seemingly meld with the ceiling.

- Once installed, the luminaire, and ceiling are tightly anchored together to restrict movement and prevent ceiling cracking
- Innovative azimuthal reflector is miter-free, one-piece, polymer composite and will not distort or separate — no racking, no light leaks
- Adjustable frame allows up to 5° of rotation



For additional photometric information, please visit [www.gothamlighting.com](http://www.gothamlighting.com).

17





# SPECIAL APPLICATIONS

**EVO® is a platform designed for various applications.** A crucial element of this platform is to provide solutions to architects and designers as they address the kinds of special application scenarios that inevitably arise in almost any real-world project. That means applying EVO's advanced solid-state technology, performance, and modularity benefits to luminaires requiring ingress protection or tamper-proof barriers. Or to decorative downlights, where enhanced aesthetics are desired.

Stay with us as Gotham® continues to expand the scope of applications for EVO downlighting products.

## EVO Vandal Resistant LED

**Equipped with Gotham's rugged Lightshield™ bezel,** EVO Vandal Resistant luminaires deliver high-performance in tough environments. A one-piece bezel made of marine-grade die-cast aluminum mounts to EVO's frame with stainless steel screws that resist tampering.

Ingress protection up to IP65 provides these luminaires with complete shielding against solid objects and dust, along with resistance to moisture and water from all directions. Corrosion-resistant Lightshield bezels are salt-spray tested to 1,000 hours.

## EVO LED Shower Light

**Locker rooms and showers are an obvious choice** for this luminaire. Like its vandal-resistant sibling, the Shower Light is wet-location listed and carries an IP65 ingress protection rating, shielding it from vapor and water spray. But the Shower Light is also suitable for hose-down applications like food processing plants, or for scenarios such as clean rooms and pharmaceutical facilities, where dust is a factor.

The Shower Light can also be used in aquatic centers, hospitals, or hospitality applications — any location requiring a non-conductive, "dead-front" design.



DLD drop luminous disk

DLR drop luminous ring

## EVO Decorative

**Some ceilings benefit from a little extra.** Decorative elements can add life to spaces where the simple look of a downlight aperture may not be enough.

For those situations, Gotham offers luminous ring and disk options as part of EVO's comprehensive product line. Featuring polished edges and turned aluminum hardware, both styles are made from 3/16" low-iron glass — highly transmissive, and free from unwanted green hues.





Shown with oil-rubbed bronze finish

EVO vandal-resistant LED (Series: EVO6VR, EVO8VR) / lm/W: Up to 102.2

**High performance, high security.** EVO® vandal-resistant luminaires are available with Gotham® Lightshield™ bezels. A downlight both rugged and precise, it features advanced solid-state technology and delivers exceptional quality of light.

- Lightshield™ bezel is made of low-copper aluminum, and finishes are salt-spray tested to 1,000 hours for superior corrosion resistance
- Stainless steel T20 Torx®-head screws ensure a tamper-proof barrier, protecting the downlights from theft and vandalism
- Decorative bezel available in plated finishes or with textured polyester powder coat in standard architectural colors
- Ingress protection up to IP65 prevents moisture and dust from entering luminaire from the roomside
- EVO solid-state luminaires tested to LM-79-08 standards — EVO LEDs tested to LM-80 standards







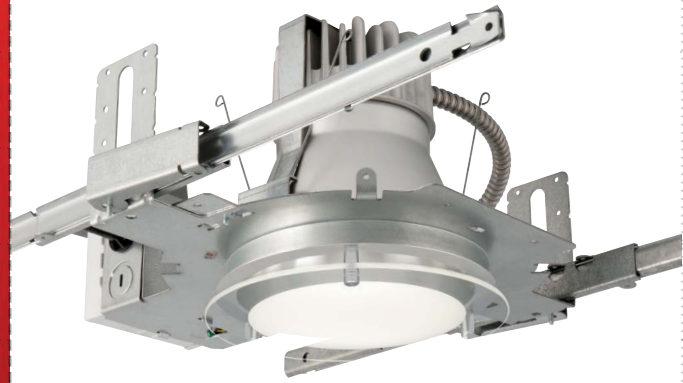
EVO shower light: drop (top), regressed (bottom) / lm/W: Up to 96.6

■ **Solid-state for the shower.** For projects that call for non-conductive, wet-location luminaires we've created the EVO® LED shower light. Highly suitable for such applications, it's available with both drop and regressed lens options as well as for new construction or retrofit installation.

- "Dead-front" trim design suitable for a wide range of applications and codes requiring a non-conductive lens assembly
- IP65 rating ensures luminaires provide ingress protection to the ceiling and protects from water spray and vapor
- EVO solid-state luminaires tested to LM-79-08 — EVO LEDs tested to LM-80 standards







EVO decorative (Series: EVO6DLD, EVO6DLR, EVO8DLD, EVO8DLR) / lm/W: 92.8


**Luminous ring, luminous disk.** Re-interpreted by Gotham® for the EVO® series, these classic decorative downlight accessories have been given a contemporary spin. Disks and rings have been re-proportioned for both 6" and 8" apertures and suspended beneath shallower standoffs.

- Luminous disks and rings both feature generous 3/16" glass with polished edges
- Low-iron glass provides better transmissivity and eliminates unwanted green hues
- EVO solid-state luminaires tested to LM-79-08 — EVO LEDs tested to LM-80 standards





# EVO®

 EVO® is a platform designed to EVolve as solid-state technology EVolves and new enabling technologies emerge. We are constantly working on the next improvements in lighting quality, aesthetics and efficiency. These advances will lead to an ever-expanding scope of applications for EVO downlighting products.

Our process is continuous improvement. Stay with us, this journey is just starting and the future is an adventure we will explore together. For more information, please visit [www.gothamlighting.com](http://www.gothamlighting.com).

